

Additional Help

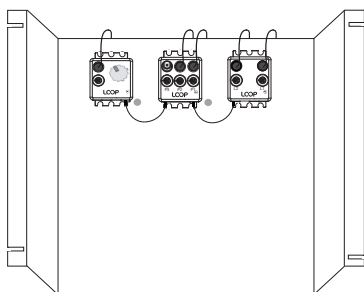
For additional installation instructions and videos, please visit our website at www.current-usa.com

What's Included

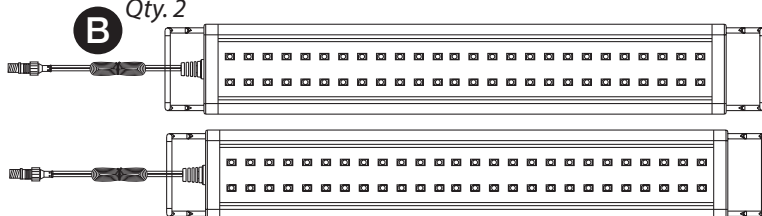
Each LOOP Marine Bundle Kit includes:

Item	Description	Items Included		
		Model #4300 36" Bundle Kit	Model #4301 48" Bundle Kit	Model#4302 72" Bundle Kit
A	LOOP® Power Center (Pre-Assembled)	1	1	1
B	Orbit™ Marine IC PRO LED (2 Lights)	1x36"	1x48"	1x72"
C	eFlux™ Wave Pumps	2x1050 gph	2x1050 gph	2x2100 gph
D	eFlux™ DC Flow Pump	1x1900 gph	1x1900 gph	1x3170 gph
E	Orbit™ Adjustable Tank Mount Bracket	2	2	2
F				

A
Qty. 1



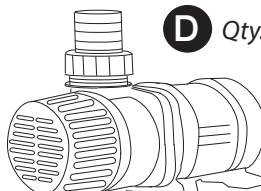
B Qty. 2



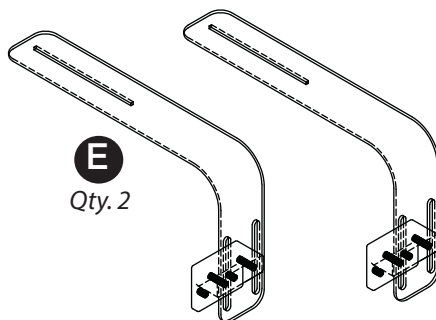
C Qty. 2



D Qty. 1



E
Qty. 2



Note:

If your LOOP® Bundle is missing any part, please contact us directly at www.current-usa.com

DO NOT RETURN TO RETAILER

Register your product at www.current-usa.com/support/product-registration. Enter your personal information, choose "LOOP Marine Bundle" and use the model number for the serial number (#4300, #4301, #4302)

**NOTE: READ ALL SAFETY INSTRUCTIONS
INCLUDED WITH EACH PRODUCT**

Power Center Installation

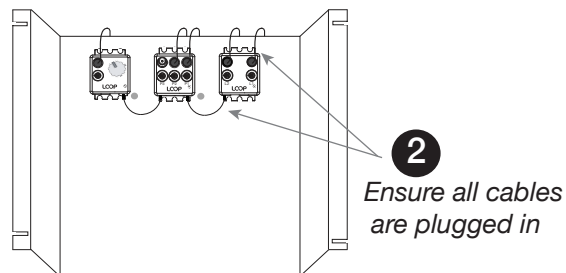
IMPORTANT: Before installing, read ALL SAFETY INSTRUCTIONS and WARNINGS

Step 1. Install the Power Center

1. **Unpack Power Center box** and remove components and mounting hardware. Each Power center box should include the following:

- 1 x Power Center (Pre-Assembled)
- 1 x LOOP® IC Controller, IR Remote, IR Cable & Mounting Hardware
- 1 x Surge Protector Power Strip
- 1 x Mounting Hardware Kit:
 - 1 x Velcro Strip
 - 4 x Wood Mounting Screws
 - 2 x Cable Holders w/Mounting Screws
 - 2 x Cable Tie Wraps

2. **Check all DC cables**, microUSB cables and AC plugs on transformers and ensure all are firmly plugged in.



3. **Locate where the Power Center will be installed.** The minimum space required is: 16.5"L x 7"W x 13"H. The surface must be flat and in a dry location protected from water and salt creep. It **MUST** be mounted to a surface in a vertical position, **DO NOT** set Power Center on stand floor due to a risk of water damage. We recommend the following locations:



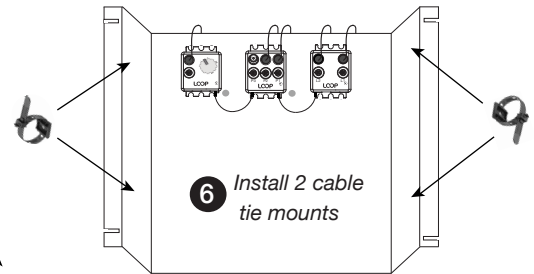
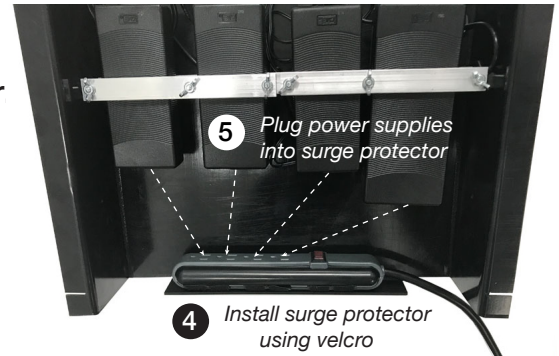
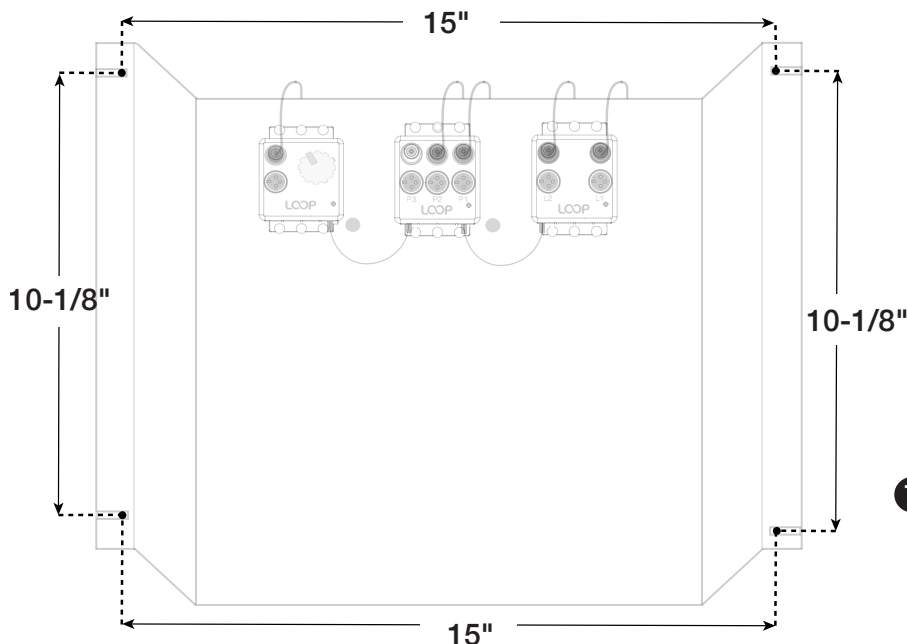
Power Center Installation

4. Install **Velcro** strip to bottom of surge protector. Attach surge protector to bottom shelf on Power Center, ensuring the cable is located in the right direction for easy plug in (determined location and cable access location on stand.)

5. Plug the four DC power supplies into surge protector

6. Install cable tie mounts to side panels of power center using the flat mounting screws and wing nuts. There are 4 locations for the mounting the 2 included cable tie mounts on the Power Center. These can be used to wrap and organize excess cable from the LED lights or wave pumps.

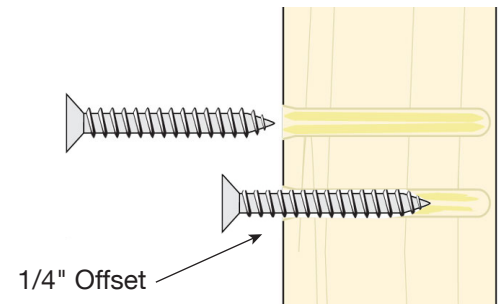
7. Use the template below to pre-install the mounting screws for the power center. Use a pencil to mark mounting holes - square 15" wide x 10-1/8" high.



7 Mark mounting holes for power center
15" Wide x 10-1/8" High

8 Install screws and
leave 1/4" offset

8. Use a small drill and drill a small hole for screw insertion. **CAUTION:** Do not drill through entire stand wall. Using a small Phillips head screwdriver, install the four wood mounting screws. Leave 1/4" of screw offset for Power Center installation.

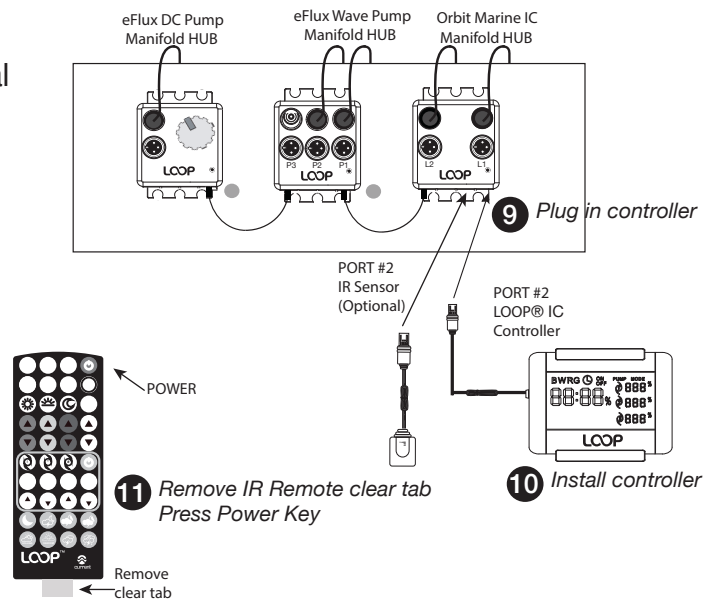


Power Center Installation

9. Plug the LOOP® IC controller into Port #1 on the Orbit IC manifold HUB. If using the optional remote IR sensor, plug into Port #2.

10. Use either the velcro tape included with the LOOP® IC controller or install the controller mounting bracket to the desired location following the included instructions.

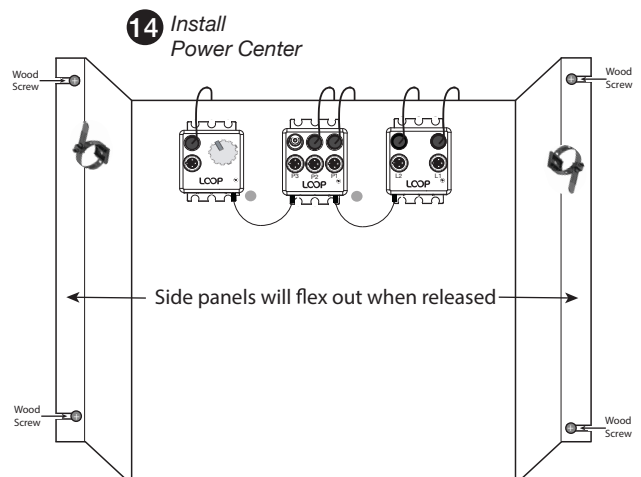
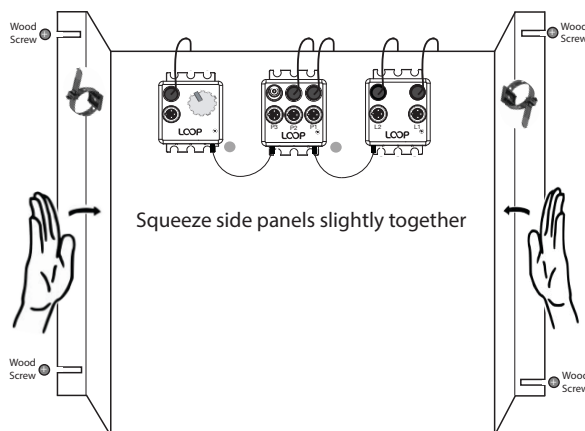
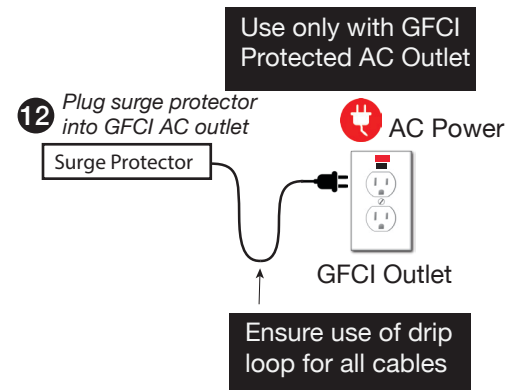
11. Unpack IR remote and remove clear tab located at the bottom of the remote. Press the red POWER key located in the top right corner and ensure to ensure the controller and remote are communicating.



12. Plug surge protector into a GFCI protected outlet and ensure drip loop is in place. CAUTION: This product MUST be plugged into a GFCI protected outlet.

13. Toggle the surge protector POWER switch to the ON position. Ensure the green indicator lights on all power supplies illuminate and the LOOP® IC controller and HUB indicator lights all turn On.

14. Install Power Center to stand wall by squeezing each side of the Power Center inwards and aligning the mounting slots with the wood mounting screws. Power Center should flex out when released and be mounted to stand wall. (See below)



Adjustable Tank Mount Arm Bracket Installation

Step 2. Install Adjustable Tank Mount Arm Brackets

1. **Unpack both Tank Mount Arm Bracket boxes**, remove components and mounting hardware.

Each arm bracket should include the following:

- 1 x Aluminum arm w/bracket (pre-installed)
- 2 x Light fixture clip with screw and turn nut
- 4 x Bracket attachment screws



2. **Determine mounting location** on tank where the arm bracket will be installed. Clean glass of any algae or debris before installation.

3. **Determine bracket mounting height** to suspend fixtures over aquarium.

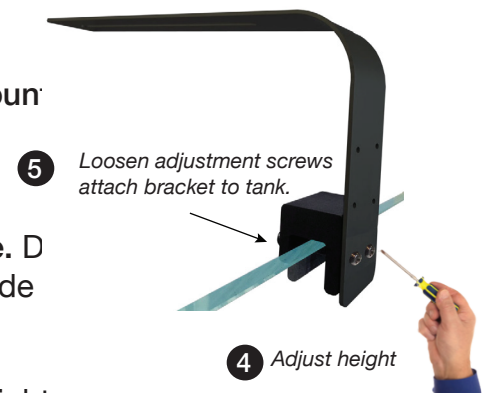
Bottom Holes = Suspends fixture ~5" over tank

Middle Holes = Suspends fixture ~6" over tank

Top Holes = Suspends fixture ~7" over tank

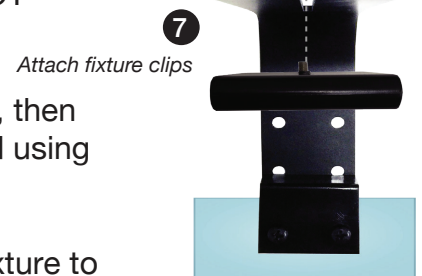
4. If mounting height needs adjusted, **unscrew the back tank mount screws with a screwdriver**. Adjust bracket to the correct height and reassemble.

5. **Loosen adjustment screws to fit over aquarium glass or frame**. **DO NOT CUT YOUR FRAME**. If you require a larger bracket for a wide frame tank, please contact us at info@current-usa.com.

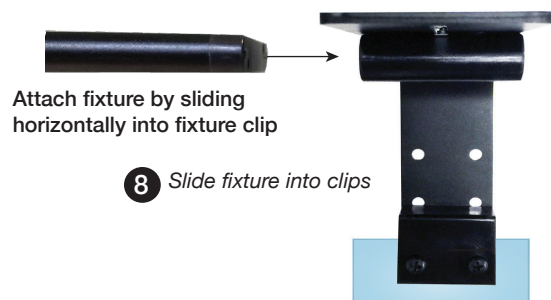


6. **Place arm bracket on aquarium in desired location** and hand tighten adjustment screws to fasten the arm bracket to tank. **DO NOT OVERTIGHTEN**.

7. **Place light fixture clips with screw into slot of arm bracket**, then tighten with turn nut. Front-to-back position can be adjusted using turn nut and sliding light and clip to optimal position.



8. **When ready, slide light fixture into light clip** and position fixture to optimal position. Route light cable behind tank arm mount and follow fixture instructions.



IMPORTANT: Follow all safety instructions included with each tank mount arm bracket.

Orbit Marine IC PRO Installation

Step 3. Install Orbit Marine PRO IC LED Lights

1. Unpack LED light fixture box and remove all components and mounting hardware.

2. Mount light fixture on aquarium

Method 1: Adjustable docking legs

Slide the adjustable docking legs on the sides of the light fixtures to match the length of your aquarium. Ensure the LED light cords are located on the side of the aquarium closest to the Power Center installation. Set fixtures on aquarium and ensure docking legs fit snug on edges of aquarium. Route lighting cables down to Power Center and organize using the included velcro cable wraps.

Method 2: Adjustable tank arm mounts

Remove adjustable docking legs from each light by sliding legs outwards. The legs do have a lock washer installed to prevent accidental pull out - therefore some force may be required to remove them (give them a good pull.) Slide fixtures into light clips on each arm bracket and adjust fixtures to optimal position. Route lighting cables down arms using the included velcro cable wraps.

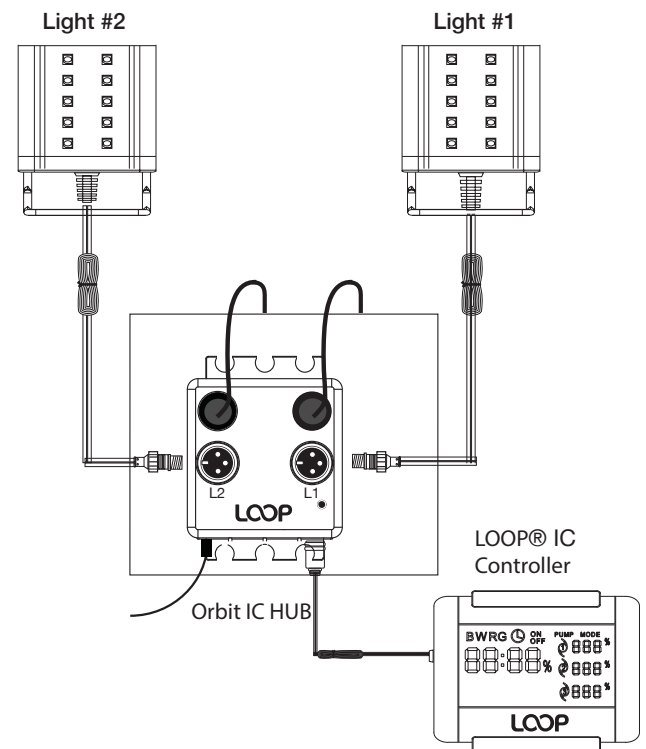
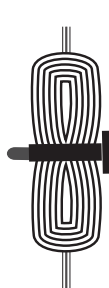
3. Route lighting cables behind stand and to Power Center. Plug Orbit Marine IC LED lights into lighting ports L1 and L2 on Orbit IC HUB.

4. Wrap any excess cable together and use Power Center Tie Wrap to attach the excess cable.

5. Press red POWER key on remote, turn LED lighting ON.

6. Follow programming steps included with Orbit Marine IC LED light to set the LOOP® IC controller clock and begin operation.

7. Wrap excess lighting cable to power center using cable tie mounts.



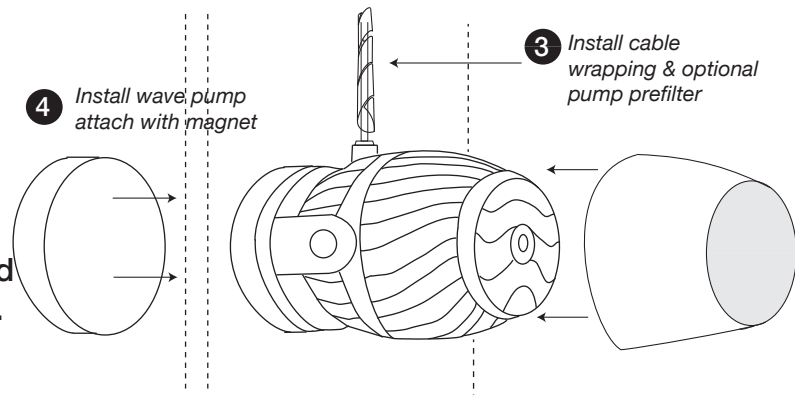
eFlux Wave Pump Installation

Step 4. Install eFlux Wave Pumps

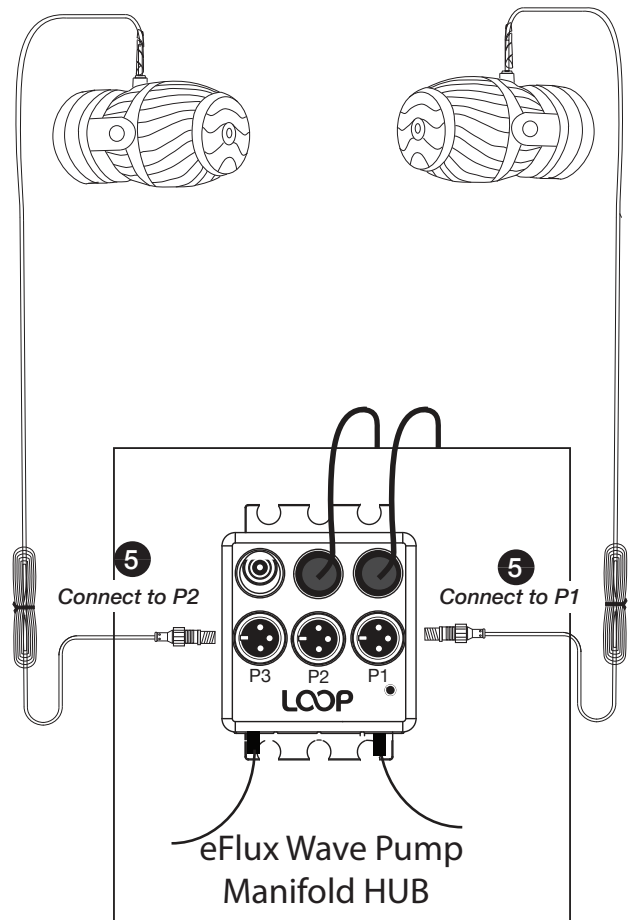
1. Unpack all components from eFlux Accessory Wave Pump boxes.
2. Choose a mounting location inside the aquarium on one of the vertical glass walls for your wave pumps. Clean location of any dirt, algae or calcium deposits.

3. Install cable wrapping around wave pump cable. This protects the pump cable from triggerfish, urchins and other animals that may damage the pump cable. Place pump prefilter over pump end.

4. Carefully separate magnet from pump and place pump into position in the aquarium. Attach pump to tank using magnet. Swivel and adjust pump as desired.



5. Route wave pump cables behind stand to Power Center. Plug wave pumps into wave pump ports P1 and P2 on eFlux Wave Pump Manifold HUB (middle blue HUB). Ensure a drip loop is in place.
6. Wrap any excess cable together and use Power Center Tie Wrap to attach the excess cable.
7. Press light blue wave pump POWER key on remote, turn wave pumps on.
8. Follow programming steps included with Orbit Marine IC PRO LED light to program pumps and adjust flow mode and flow rate on wave pumps.



NOTE: READ ALL SAFETY INSTRUCTIONS INCLUDED WITH EACH PRODUCT

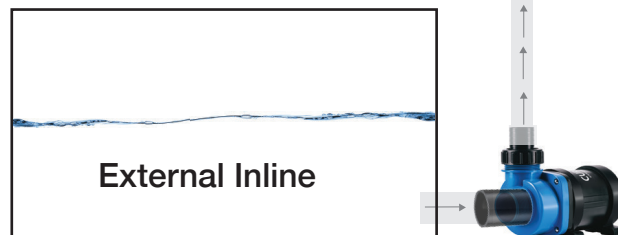
eFlux DC Flow Pump Installation

Step 5. Install eFlux DC Flow Pumps

1. Unpack all components from eFlux DC Flow Pump box.

2. Determine installation method

The eFlux DC flow pump can be installed either submersible (internal) or inline (external). If using in a submersible application, please use the inlet pump screen (included).



3. Install Pump from eFlux DC Flow Pump box.

Submersible (internal) Installation

1. Thread pump filter screen to inlet of the pump.
 2. Place O-ring inside the outlet barb fitting and quick coupling. Thread barb fitting to pump and hand tighten.
 3. Connect return hose (not included) by sliding over barb fitting. Ensure hose is secured using a hose clamp (not included).
- Fill sump with water and check for water/air leaks.



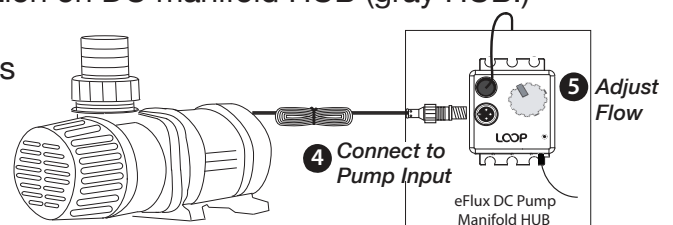
Inline (external) Installation

1. Place o-ring inside the inlet barb fitting and quick coupling. Thread barb fitting to pump inlet and tighten.
 2. Place o-ring inside the outlet barb fitting and quick coupling. Thread barb fitting to pump outlet and hand tighten.
 3. Connect inlet hose (not included) by sliding over inlet barb fitting. Ensure hose is secured by using a hose clamp (not included.) Connect return hose to outlet barb fitting and secure with clamp (not included).
- Fill sump with water and check for water/air leaks.



4. Route DC pump cable to Power Center (larger model #4302 includes a DC pump extension cable if required.) Plug DC pump into pump connection on DC manifold HUB (gray HUB.)

5. Adjust flow dial from 0-100% until desire flow rate is achieved. Note: eFlux DC Flow pumps have a slow start up/ramp to full speed. Allow pump to run 30 seconds to reach adjusted flow.



**NOTE: READ ALL SAFETY INSTRUCTIONS
INCLUDED WITH EACH PRODUCT**